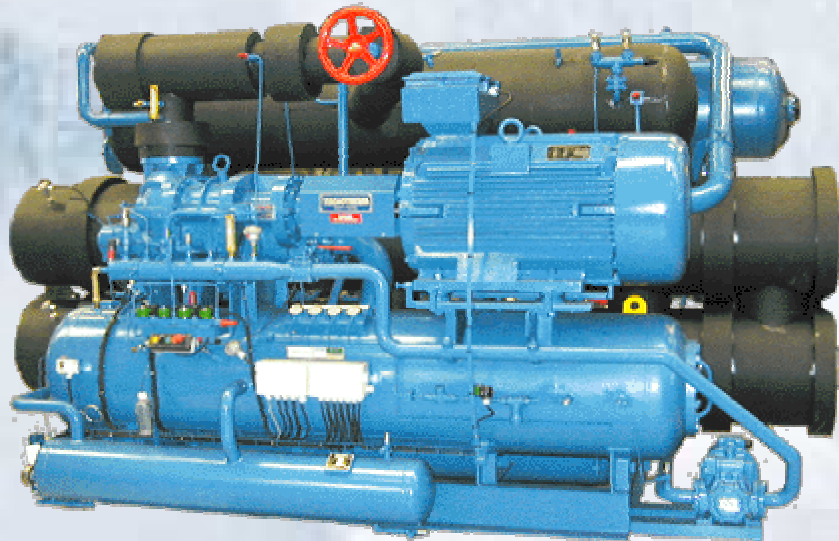




TEKNOTHERM

MARINE AND INDUSTRIAL REFRIGERATION



RSW UNIT with screw compressor

Factory assembled RSW-unit

- ◆ Reduced installation time on board
- ◆ Wide capacity range from 250 kW to 1500 kW
- ◆ Screw compressor with capacity regulation
- ◆ Ammonia or Halocarbons as refrigerant
- ◆ Shell & tube chiller with seawater inside the tubes and refrigerant evaporating outside
- ◆ Shell & tube condensers
- ◆ Easy cleanable waterside
- ◆ High corrosion resistance with titanium or al-brass tubes in chiller and condenser
- ◆ Units are shop piped and wired
- ◆ Optional factory mounted insulation

Teknotherm RSW-system

Teknotherm RSW plants mean rapid chill-down and storage of the catch in Refrigerated Sea Water. Storing the catch in RSW is an effective and cost-saving method of preserving the catch until landing ashore or further processing on board. The catch is brought down close to the freezing point of seawater or freshwater in a minimum time by Teknotherm's highly efficient RSW-chillers of flooded shell & tube type.

RSW UNIT with screw compressor



**Consult Teknotherm for full specification
for your project.**



TEKNOTHERM
MARINE AND INDUSTRIAL REFRIGERATION

Head office - Halden:

P.O.Box 87, N-1751 Halden, Norway

Phone: +47 69 19 09 00 - Fax: +47 69 19 09 01

www.teknotherm.com

Rev. 04/2003