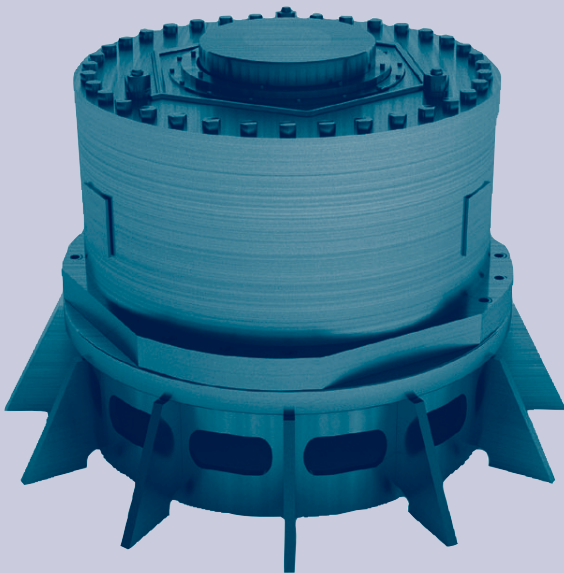


Van der Velden COMMANDER™ Rotary Vane Steering Gear



A key benefit of the Van der Velden COMMANDER™ rotary vane steering gear is that the rudder angles of up to $2 \times 65^\circ$ give greater flexibility when choosing the design and type of your rudders.

Enhanced manoeuvrability and increased control in harbours are the result.

Van der Velden COMMANDER™ rotary vane steering gear includes a compact actuator inside a closed housing, with equal torque at all rudder angles. Inside the actuator is a fully integrated rudder carrier for upper rudder stock diameters of approx. 660 mm (depending on rudder angle). The smoothest possible rudder movement is assured.

The simple, robust and compact design of the steering gear and the fact that it only has one movable part ensures trouble-free, maintenance-free operation for over 60,000 hours. Significant cost savings will be the result. Van der Velden COMMANDER™ rotary vane steering gear meets the requirement of all class Authorities..

CHOOSE TO INTEGRATE

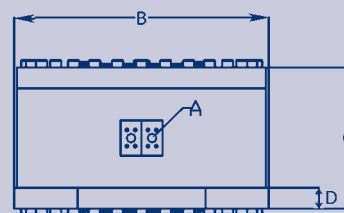
Van der Velden Marine Systems is a single source supplier and can deliver complete manoeuvring packages including rudders, rudder trunks, EPS™ thrusters, streamline bodies, steering gear and steering gear foundations.

Customers and yards alike benefit from an easy to install and integrated solution, a unified overall design and one project coordinator for the manoeuvring system.

SMART MARITIME SOLUTIONS

INSTALL VAN DER VELDEN COMMANDER™ STEERING GEAR AND BENEFIT FROM ►

- Easy to install due to clamping rings
- Easy to install on ships foundation due to self alignment on Chockfast™ bed
- Elimination of fitting bolts
- Unique sealing system, self compensating for wear
- Long life time bearing and seal cycle (> 15 years)
- No routine measurement of wear is necessary
- Additional upper axial bearing to restrain rudderstock push-up from external loads
- Automatic hydraulic isolation in case of piping failure
- Case drain to minimize stress on external seals



SPECIFICATION VAN DER VELDEN COMMANDER™ ROTARY VANE RANGE

TYPE	working torque max. [kNm]	rudder angle max. [kNm]	number of vanes	design working pressure [bar]	rudder upper stock dia. max. [mm]	weight actuator [kg]	dimension A SAE	dimension B [mm]	dimension C [mm]	dimension D [mm]
BRV25	27,5	2x65	2	100	150	280	3/4"	516	250	58
BRV40	44	2x65	2	100	180	506	3/4"	612	322	50
BRV63	69	2x65	2	100	200	914	3/4"	690	322	50
BRV100	110	2x65	2	100	240	1000	3/4"	774	398	60
BRV160	176	2x65	2	100	280	1630	1"	900	480	76
BRV250	275	2x65	2	100	320	2100	1 1/4"	1000	520	76
BRV400	440	2x45	3	100	380	2910	1 1/4"	1080	594	76
BRV630	690	2x45	3	100	430	3790	1 1/2"	1132	704	102
BRV1000	1100	2x45	3	100	500	7500	2"	1474	794	112
BRV1600	1600*	2x45	3	100	590*	12490	2"	1780	940	127

* = CLAMPING RINGS OR TAPPED

VAN DER VELDEN® MARINE SYSTEMS
www.vandervelden-marinesystems.com

Oceangoing vessels

Van der Velden Barkemeyer GmbH • Wilhelm-Bergner-Straße 15 • D-21509 Glinde (nearby Hamburg) • Germany
T +49 (0)40 711 80 20 • F +49 (0)40 711 00 86 • oceangoing@vdvelden.com • www.vdvelden.com

Yachting

Van der Velden Systeemtechniek B.V. • De Gaffel 14 • P.O. Box 513 • 9200 AM Drachten • The Netherlands
T +31 (0)512 58 20 20 • F +31 (0)512 54 46 03 • yachting@vdvelden.nl • www.vdvyachting.nl

Inland shipping

A. van der Velden B.V. • Dorpsstraat 67a • P.O. Box 2061 • 2930 AB Krimpen aan de Lek (nearby Rotterdam) • The Netherlands
T +31 (0)180 51 15 77 • F +31 (0)180 51 15 78 • inlandshipping@vdvelden.nl • www.vdvelden.nl